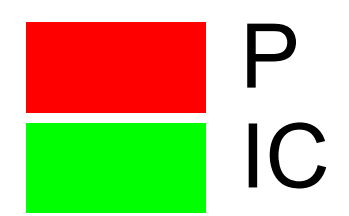
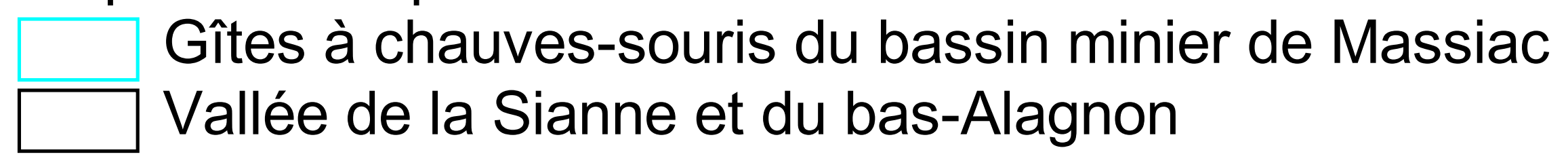


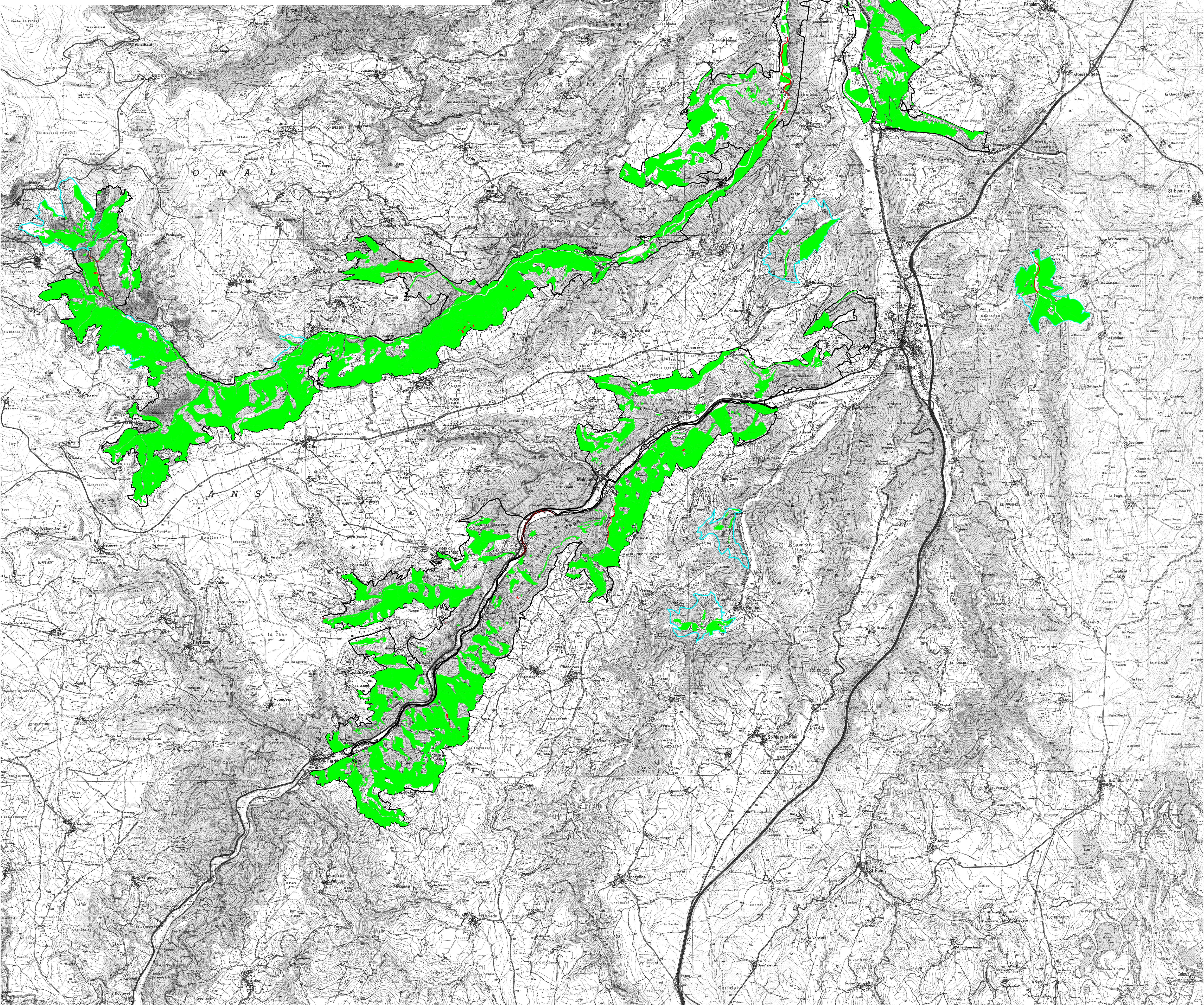
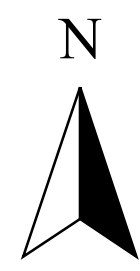
Statuts des habitats naturels d'intérêt communautaire

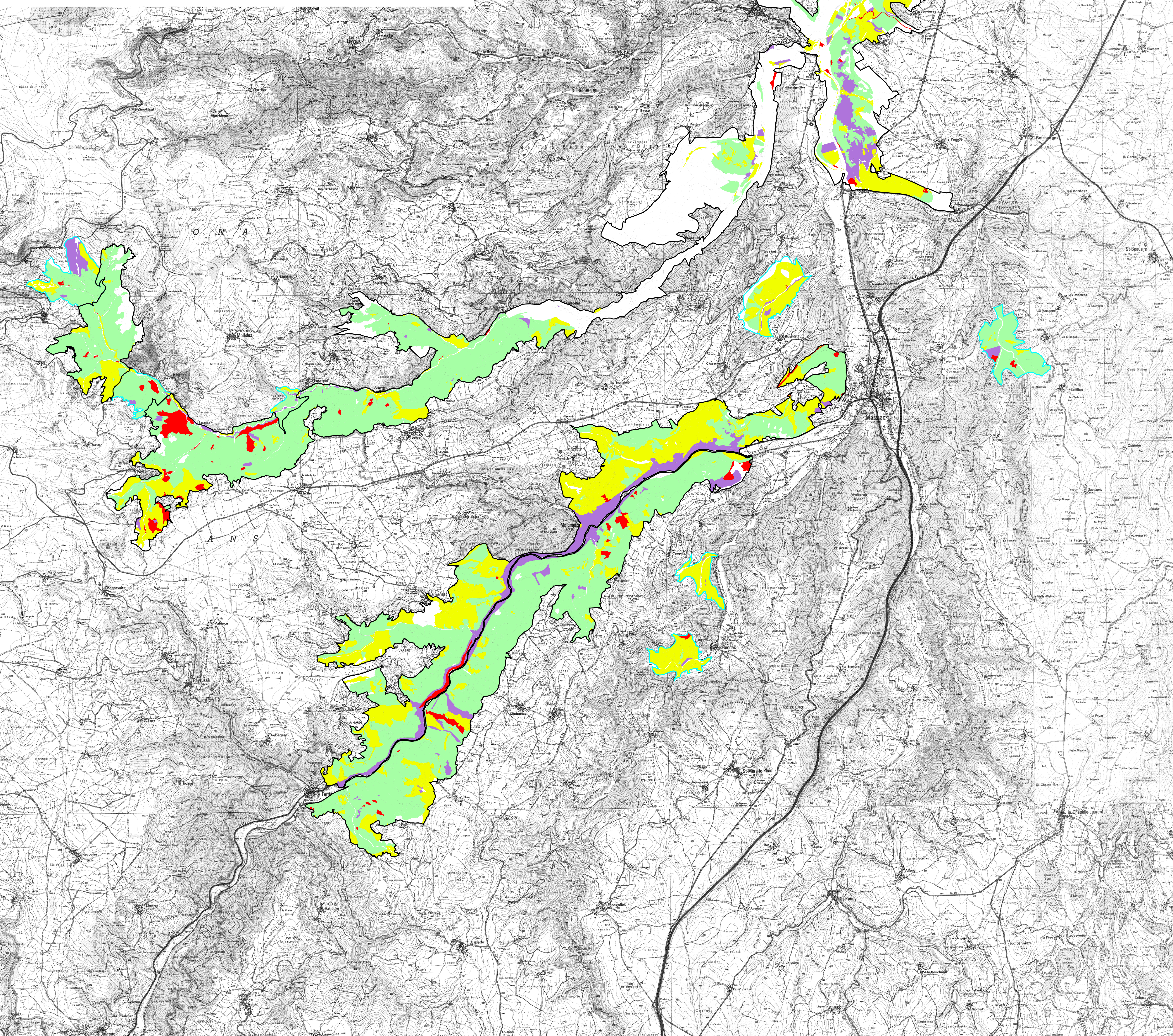


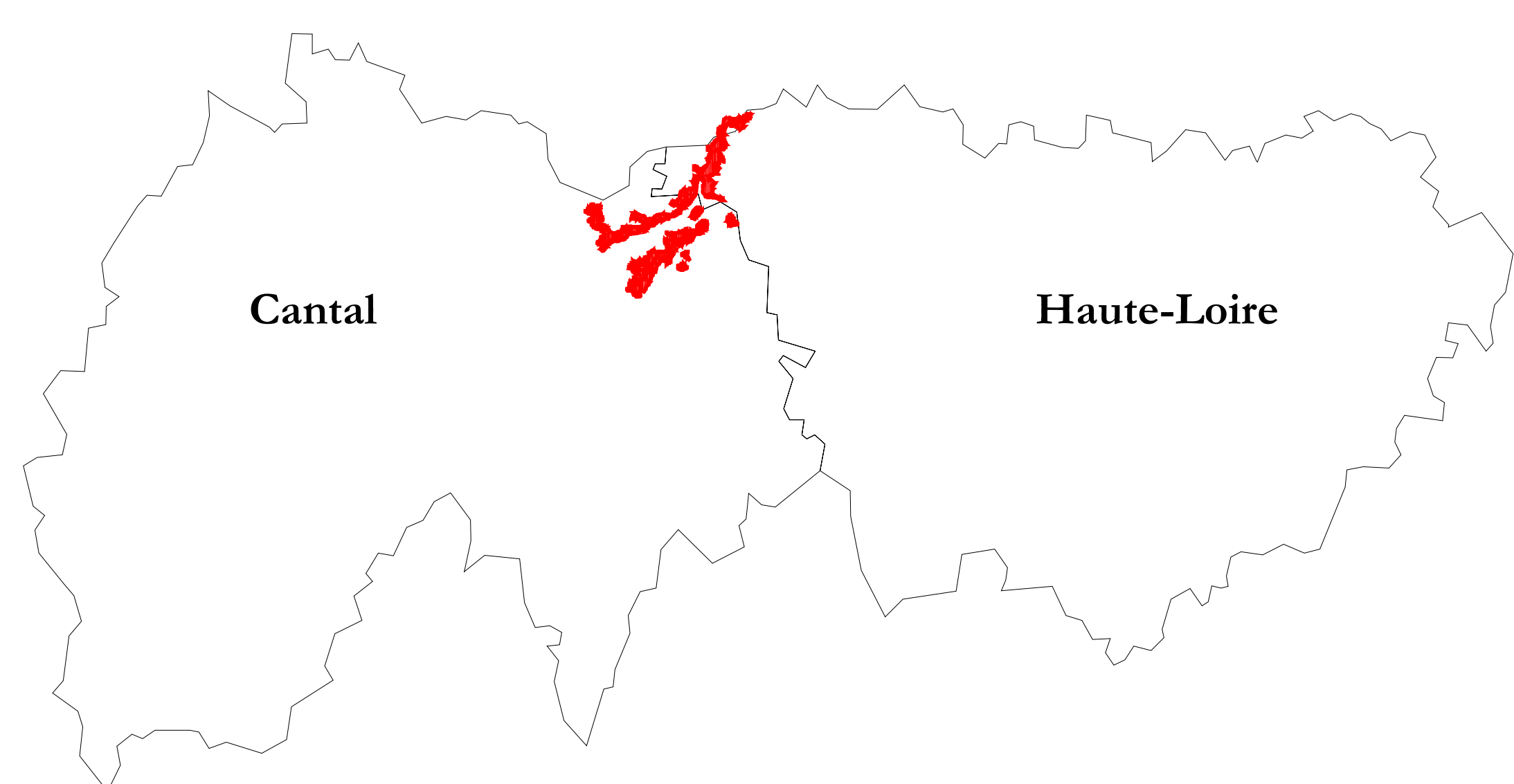
Proposition de périmètres



500 0 500 1000 Mètres

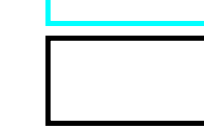







Proposition de périmètres

 Gîtes à chauves-souris du bassin minier de Massiac

 Vallée de la Sianne et du bas-Alagnon

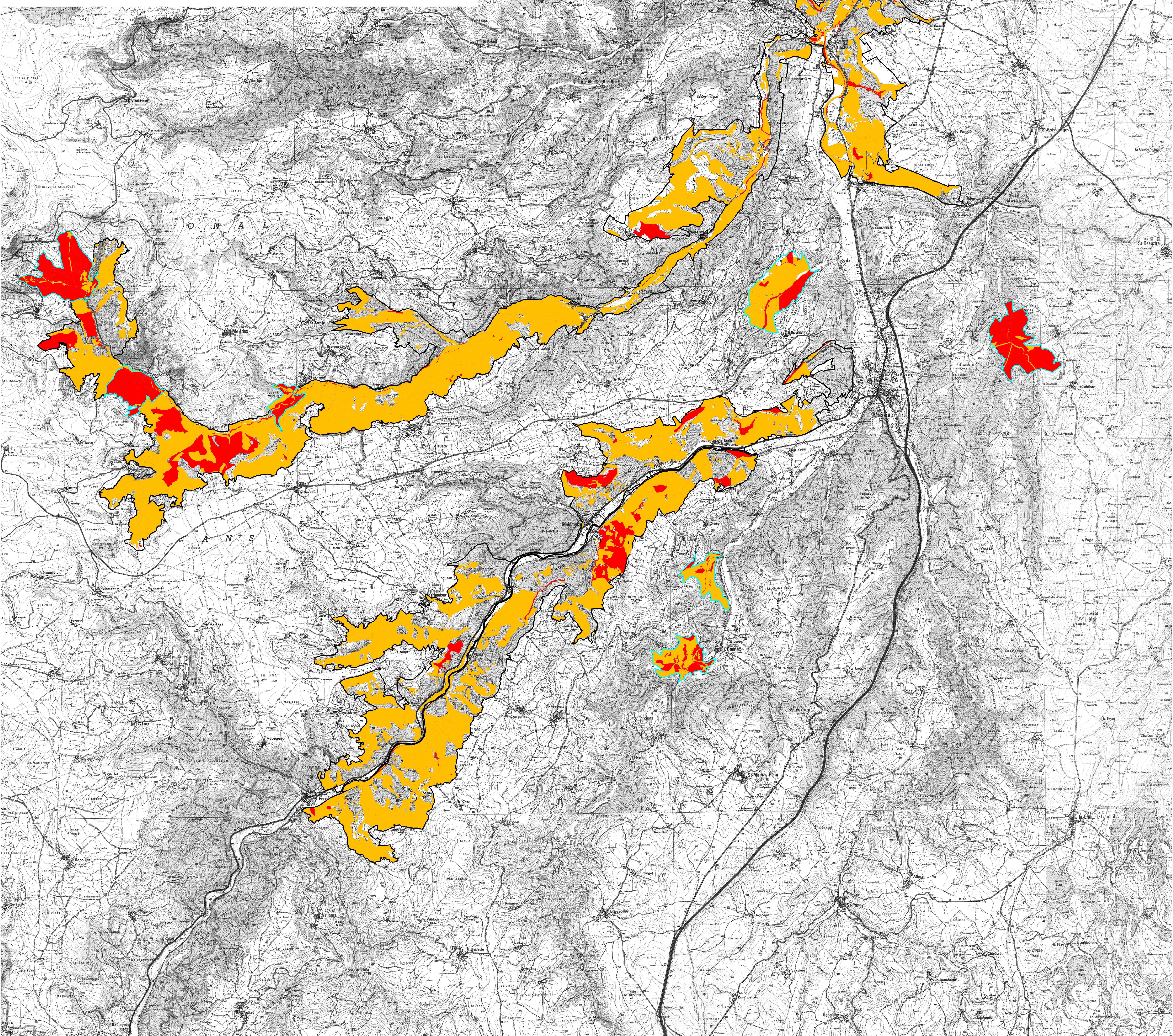
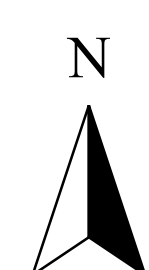
Niveau de priorité

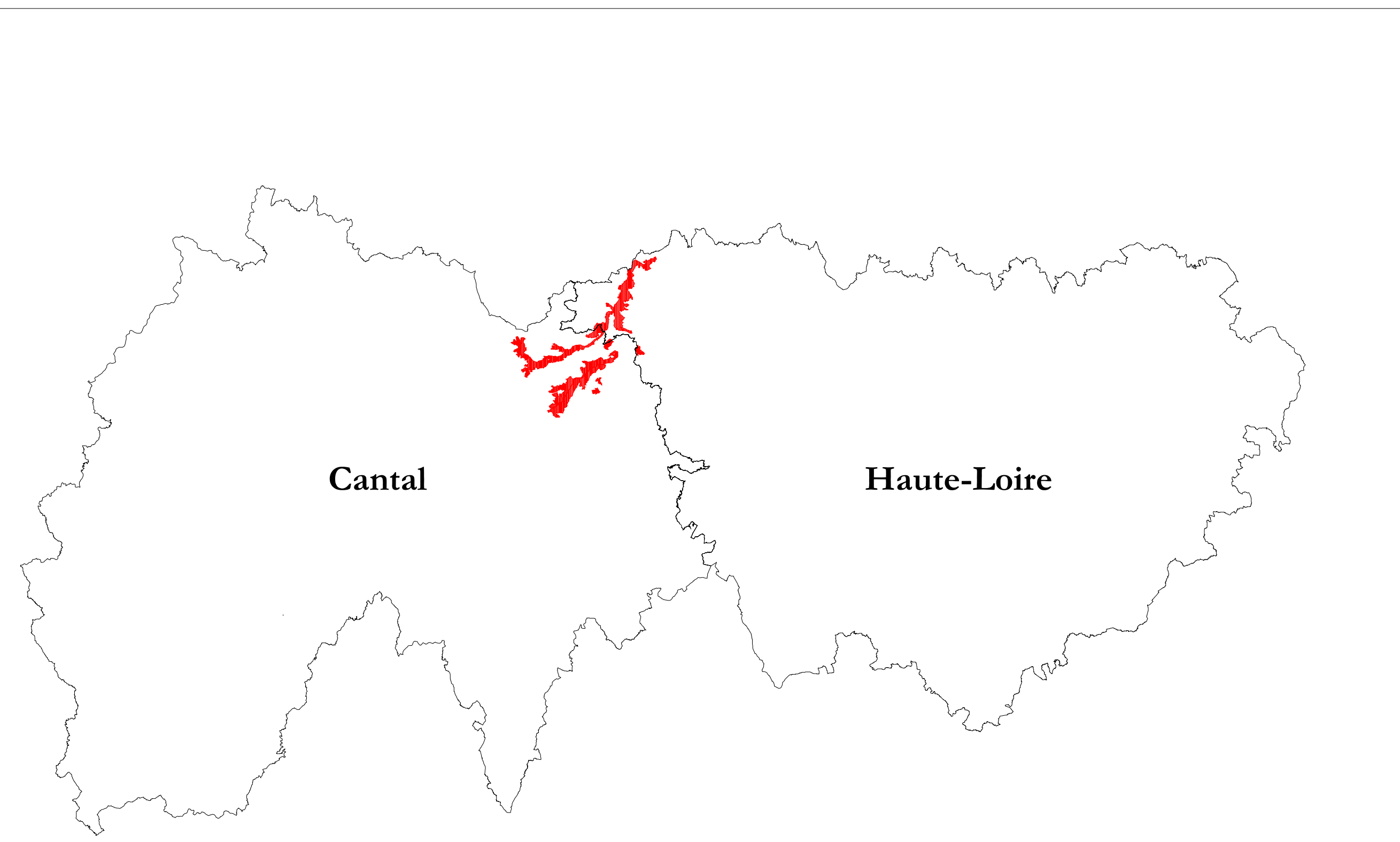
 I

 II

 III

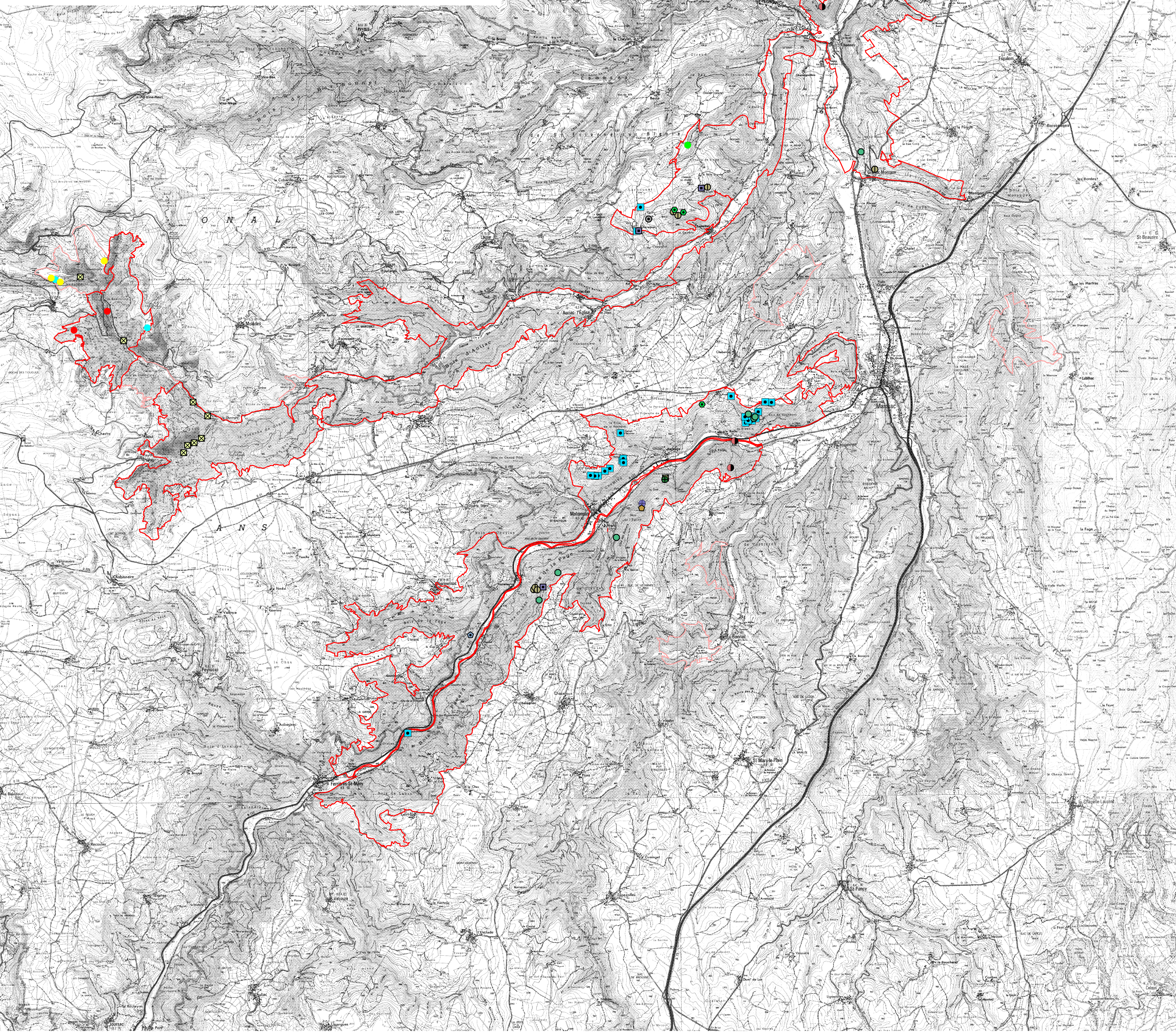
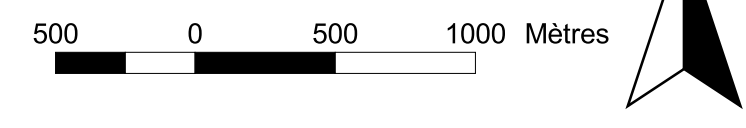
500 0 500 1000 Mètres

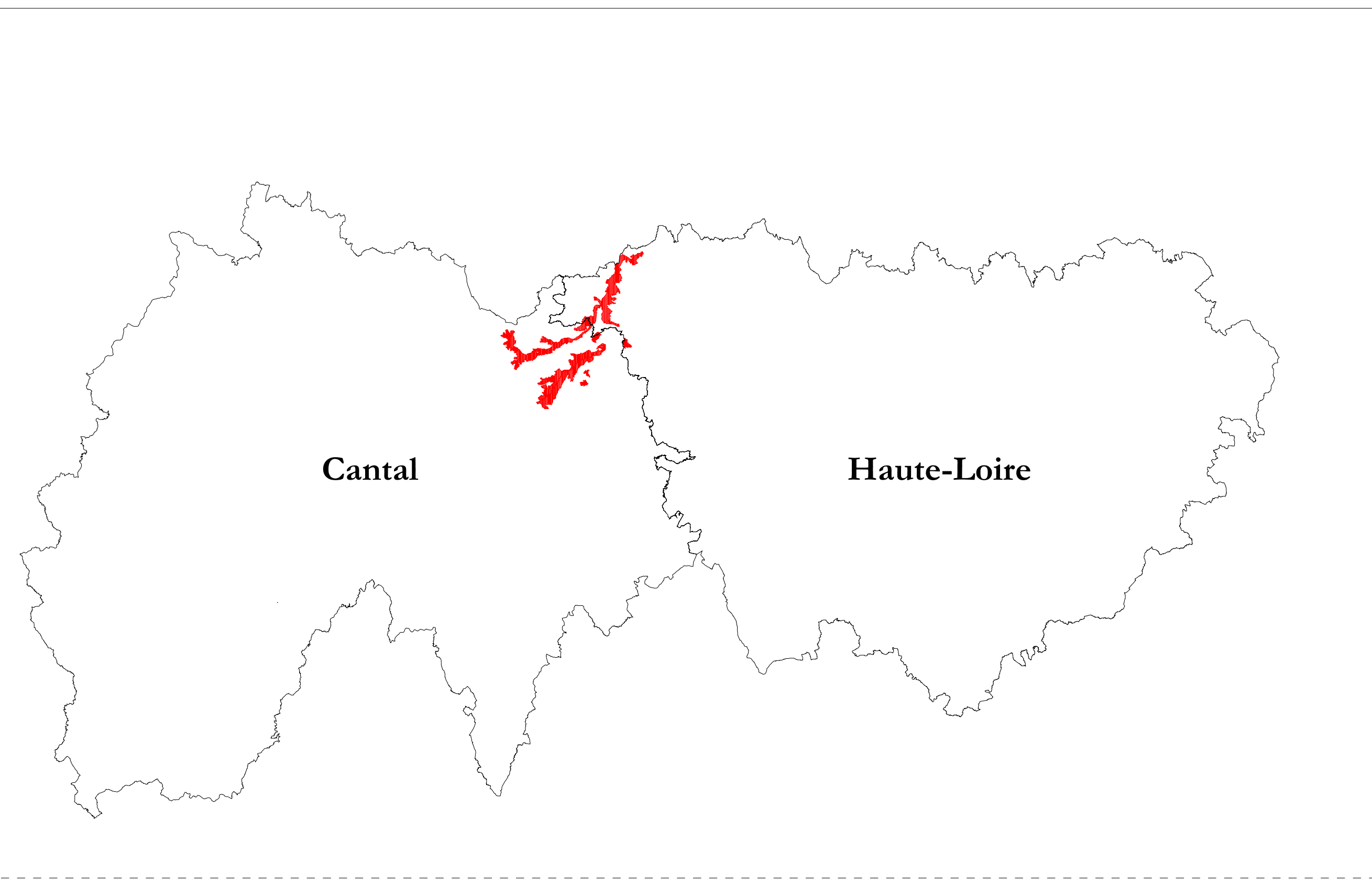




Especies d'intérêt communautaire et à statuts

- | | |
|--|-----------------------------------|
| ● Buxbaumia viridis (DH II) | ● Espèces d'intérêt communautaire |
| ● Arnica montana L. (DH V) | |
| ● Galanthus nivalis (DH V) | |
| ● Gentiana lutea (DH V) | |
| ○ Cephalanthera damasonium | |
| ● Cephalanthera rubra | |
| ■ Gagea bohemica | |
| ■ Gagea villosa | Autres statuts de protection |
| ● Liliun martagon | |
| ● Listera ovata | |
| ● Lonicera alpigena | |
| ● Orchis militaris L. | |
| ● Potentilla rupestris | |
| ■ Scilla lilio-hyacinthus | |
| ● Tragopogon crocifolius | |
| ● Vincetoxicum hirundinaria | |
| ■ Périmètres des sites Natura 2000 | |
| ■ Gîtes à chauves-souris du bassin minier de Massiac | |
| ■ Vallée de la Siann et du bas-Alagnon | |





- Relevés phytosociologiques
 - Relevés sommaires de végétation
- Périmètres des sites Natura 2000
- Gîtes à chauves-souris du bassin minier de Massiac
 - Vallée de la Siagne et du bas-Alagnon

