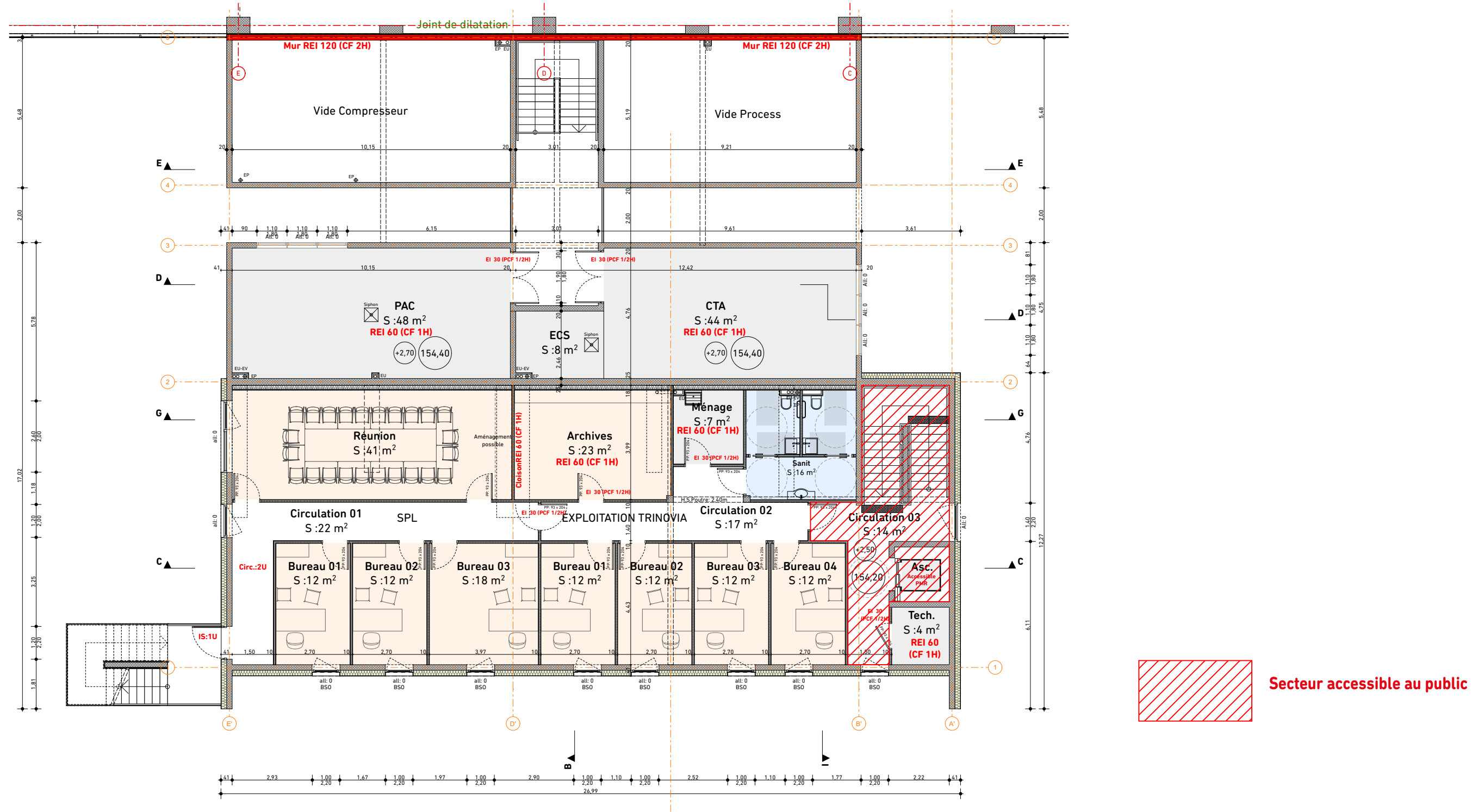


Plan R+2 - PC40-5 - PC39-8

1:150



Plan R+1 - PC40-5 - PC39-8

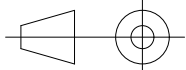



1:150



CONSTRUCTION D'UN CENTRE DE TRI INTERREGIONAL
Parc économique 'Loulbade' - 79700 MAULEON
UniTri - Société Publique Locale
ZI La Bergerie - 1 rue Thomas Edison - 49280 LA SEGUIERE

BRANGEON Maitrise Exploitation du centre de tri	Séché Co-traitant Exploitation du centre de tri	egdc Co-traitant Génie civil	TRIADÉ Co-traitant Architecte	setec Co-traitant Maîtrise d'œuvre	Hofmann GROUP Co-traitant Ensemble
--	--	---	--	---	---

PROJET	UNTRI	TRADÉ	PC39-40	21-12-2009	FAO	ENS	NUMERO	4	IND	1300414
--------	-------	-------	---------	------------	-----	-----	--------	---	-----	---------

Echelle : 1:150		DS PC40-5 - PC39-8 - Plans R+1 R+2													
		Ref. 1606-20-79													
															
BET Environnement		BET Structure Bâtiment		BET Fluides		Bureau de controle Coordinateur/ SPS									
PROJET		TRADITEUR		PHASE		DATE		TYPE		ZONE		IND		FORMAT	
UNTRI		TRADÉ		PC39-40		21-12-2020		PAQ		ENS		A		1320x414	